

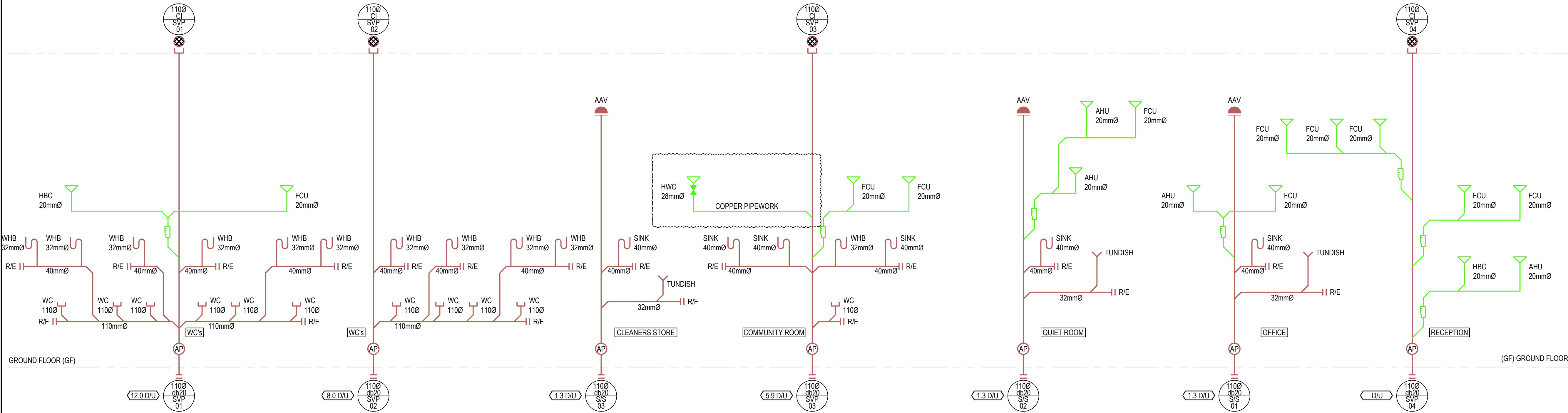
THIS DRAWING IS INDICATIVE AND REPRESENTS ONLY THE DESIGN INTENT, THE CONTRACTOR MUST PRODUCE FULLY CO-ORDINATED WORKING / INSTALLATION DRAWINGS AS REFERRED TO IN THE CONTRACT DOCUMENTATION

DRAINAGE NOTES

- DO NOT SCALE FROM THIS DRAWING.
- DRAWING TO BE READ IN CONJUNCTION WITH SPECIFICATION, DOCUMENTATION, DRAWINGS & ALL RELEVANT BRITISH STANDARD DOCUMENTS.
- THE ENTIRE DRAINAGE INSTALLATION SHALL COMPLY IN ALL RESPECTS WITH THE REQUIREMENTS OF THE CURRENT EDITION OF THE BUILDING REGULATIONS 2010 (AMENDED 2016), THE REQUIREMENTS OF THE LOCAL DRAINAGE INSPECTOR AND BS EN 12056:2000.
- ALL FITTINGS, PLANT & EQUIPMENT TO BE INSTALLED, REGULATED & TESTED IN ACCORDANCE WITH THE MANUFACTURERS PRINTED INSTRUCTIONS.
- ALL SOIL & WASTE PIPE CONNECTIONS TO DRAIN MUST BE MADE WITH PIPE MANUFACTURERS PATENTED REDUCERS, ADAPTERS & CONNECTORS.
- ALL PIPEWORK TO BE ADEQUATELY SUPPORTED THROUGHOUT ITS LENGTH.
- RODDING POINTS TO BE PROVIDED ON H/L PIPEWORK AT ALL CHANGES OF DIRECTION.
- INTUMESCENT FIRE SLEEVE/COLLAR TO BE INSERTED ON 500 & OVER PIPEWORK PASSING THROUGH FIRE RATED WALLS & FLOORS.
- AAVS TO BE MOUNTED ABOVE THE OVERFLOW LINE OF THE APPLIANCES SERVED & BE SUITABLY VENTILATED AND POSITIONED TO ALLOW FUTURE MAINTENANCE.
- WHERE SVP'S PENETRATE THE ROOF STRUCTURE THE SVP SHALL BE FULLY WEATHERED TO SUIT THE ROOFING MATERIAL AND TO THE ARCHITECTS REQUIREMENTS
- 110mmØ CONNECT TO WC WITH MULTIKWICK CONNECTOR

DRAINAGE LEGEND

- SOIL VENT PIPE
- PIPEWORK AT LOW LEVEL
- PIPEWORK WITHIN FLOOR VOID/BELOW SLAB
- PIPEWORK AT HIGH LEVEL
- PIPEWORK WITHIN CEILING VOID
- RISER REFERENCE (x DENOTES RISER NUMBER)
- AAV AIR ADMITTANCE VALVE
- AP ACCESS POINT
- DW DISHWASHER
- GW GLASSWASHER
- RE RODDING EYE
- RWP RAIN WATER PIPE
- S/S STUB STACK
- SVP SOIL VENT PIPE
- VP VENT PIPE
- W/B WATER BOILER
- WHB WASH HAND BASIN
- WP WASTE PIPE
- HWC HOT WATER CYLINDER
- CV CEILING VOID
- H/L HIGH LEVEL
- L/L LOW LEVEL
- DFA DROP FROM ABOVE
- DTB DROP TO BELOW
- RFB RISE FROM BELOW
- RTA RISE TO ABOVE



P02	DRAFT TENDER ISSUE	ZA	JH	GWR	29.10.25
P01	STAGE 4B ISSUE	ZA	JH	GWR	18.07.25
REV	DESCRIPTION	BY	CHK	APP	DATE

Project Status:	DRAFT TENDER ISSUE
-----------------	--------------------

ENGINEERING POWERED BY THE PAST
BUILDING THE FUTURE

Unit A2, Hatchers Yard
9 Tanner Street
London, SE1 3LE
T 44 (0) 203 755 5560
www.harleyhaddow.com

Project: 313293
TOWER OF LONDON
REVELLER

Drawing Title:
DRAINAGE SERVICES
SCHEMATIC

Scale @ A1 1:100	Date OCT 2024	Engineer ZA
Drawing No. 313293-HAH-01-XX-D-P-05290	Revision P02	